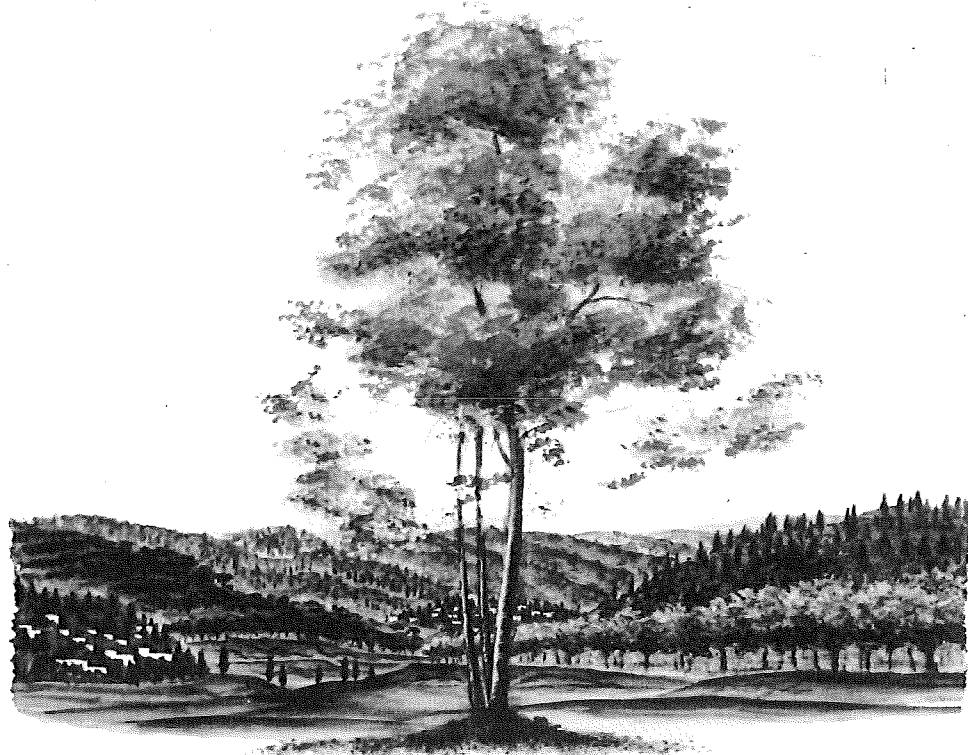


# Trees for Israel



כ' תבואו אל הארץ ונטעתם (ויקרא "ט"ג')

*"When you shall come to the land you shall plant trees."*— Leviticus 19:23

In Honor of

**Randy Kessler**

Thank you for your service on  
the Southeast Region Board of Directors  
and for your commitment to  
the Jewish National Fund.

Beth Gluck  
Director, Southern Zone

Ronnie Porat  
Israel Emissary

Lauren Mescon and Todd Starr  
Co-Presidents, Southeast Region

Michael Miller  
President, Southern Zone



קוץ קימת לישראל  
KKL - JNF  
Keren Kayemeth LeIsrael



**Jewish National Fund (JNF)**  
**began in 1901 collecting coins in blue boxes**  
**to purchase land and return the Jewish people**  
**to their homeland.**

For over 100 years, JNF has evolved into a global environmental leader and become the central address for partnering with the land and people of Israel. JNF has planted 240 million trees; built over 1,000 parks and recreational areas; constructed security roads; educated students around the world about Israel; created new communities so that Jews from around the world would have a place to call home; discovered new means of growing plants under arid conditions, bringing green to the desert; and built over 200 reservoirs and water recycling centers, increasing Israel's water supply by 10%. Today, JNF is supporting Israel's newest generation of pioneers by bringing life to the Negev Desert, Israel's last frontier.

A United Nations NGO, JNF sponsors international conferences on desertification, shares afforestation techniques, and funds research on arid land management. JNF is a registered 501(c)(3) organization and continuously earns top ratings from charity overseers. For more information on JNF, call 888-JNF-0099 or visit [www.jnf.org](http://www.jnf.org)

To plant more trees, or to learn how you can use tree certificates as invitations for your next simcha, please visit: [www.jnf.org/store](http://www.jnf.org/store), or call 800-542-TREE (8733)

Contributions are tax deductible



Printed on Recycled Paper 



Forestry ■ Water ■ Community Development ■ Security ■ Education ■ Research ■ Tourism & Recreation